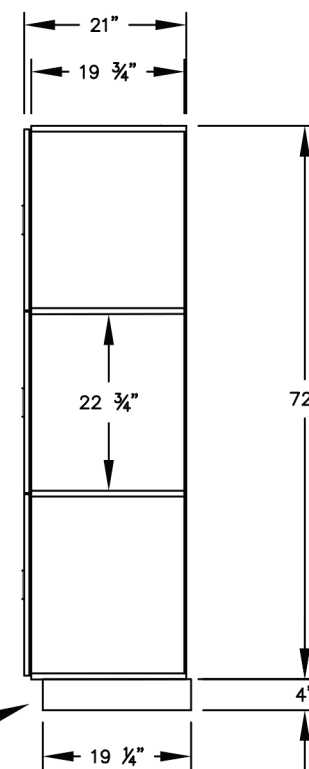


(NOTE: DESIGNER LOCKER  
SHOWN WITHOUT SIDE PANEL  
OR SLOPING HOOD. PLEASE  
ORDER SEPARATELY.)



(BASES ARE MADE OF INDUSTRIAL GRADE  
PARTICLEBOARD AND ARE COVERED IN A  
DURABLE BLACK LAMINATE. PLEASE SET  
BASE TO ALLOW  $\frac{5}{8}$ " BETWEEN THE BACK OF  
THE LOCKER AND THE WALL FOR AIR  
VENTILATION.)

#### NOTES:

MODEL #H33361  
12" WIDE DESIGNER WOOD LOCKERS  
TRIPLE TIER - 3 WIDE

9 LOCKER COMPARTMENTS  
EACH COMPARTMENT:  $10\text{-}\frac{3}{4}$ "W x  $22\text{-}\frac{3}{4}$ "H x  $19\text{-}\frac{3}{4}$ "D

#### PRODUCT SERIES:

12" WIDE DESIGNER WOOD LOCKERS



**NATIONALMAILBOXES**  
— A DIVISION OF NMHP INC.

*North America's Commercial & Residential Mailbox Leader!*

Address: P.O. Box 13144, Wauwatosa, WI 53213  
Phone Number: 1-800-676-5161  
Website: [www.NationalMailboxes.com](http://www.NationalMailboxes.com)

MODEL	H33361	REV	
SCALE	NONE	LAST REV DATE	07/2018
DRAWING NUMBER	DRAWN BY		