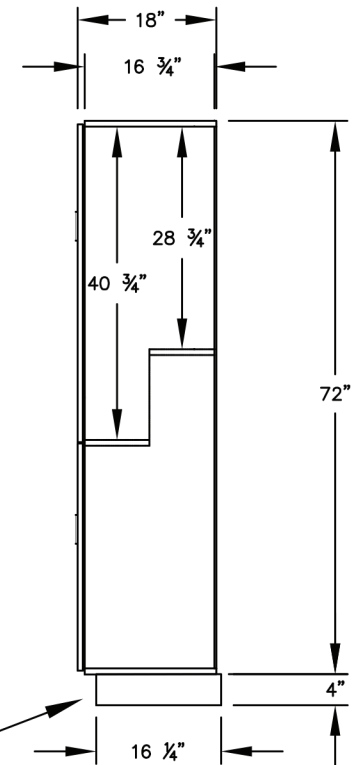


(NOTE: DESIGNER LOCKER  
SHOWN WITHOUT SIDE PANEL  
OR SLOPING HOOD. PLEASE  
ORDER SEPARATELY.)

## SIDE VIEW



(BASES ARE MADE OF INDUSTRIAL GRADE  
PARTICLEBOARD AND ARE COVERED IN A  
DURABLE BLACK LAMINATE. PLEASE SET  
BASE TO ALLOW  $\frac{5}{8}$ " BETWEEN THE BACK OF  
THE LOCKER AND THE WALL FOR AIR  
VENTILATION.)

### NOTES:

MODEL #H27168

15" WIDE DESIGNER WOOD LOCKERS  
DOUBLE TIER 'S' STYLE - 1 WIDE

2 LOCKER COMPARTMENTS

EACH COMPARTMENT: 13-3/4"W x 40-3/4"H x 16-3/4"D

(THE DOUBLE TIER 'S' STYLE DESIGNER LOCKER INCREASES EACH  
COMPARTMENT ON ONE SIDE TO ACCOMMODATE GARMENTS.)

### PRODUCT SERIES:

## 12" WIDE DESIGNER WOOD LOCKERS



**NATIONALMAILBOXES**  
A DIVISION OF NMHP INC.

*North America's Commercial & Residential Mailbox Leader!*

Address: P.O. Box 13144, Wauwatosa, WI 53213  
Phone Number: 1-800-676-5161  
Website: [www.NationalMailboxes.com](http://www.NationalMailboxes.com)

MODEL	H27168	REV	
SCALE	NONE	LAST REV DATE	07/2018
DRAWING NUMBER		DRAWN BY	