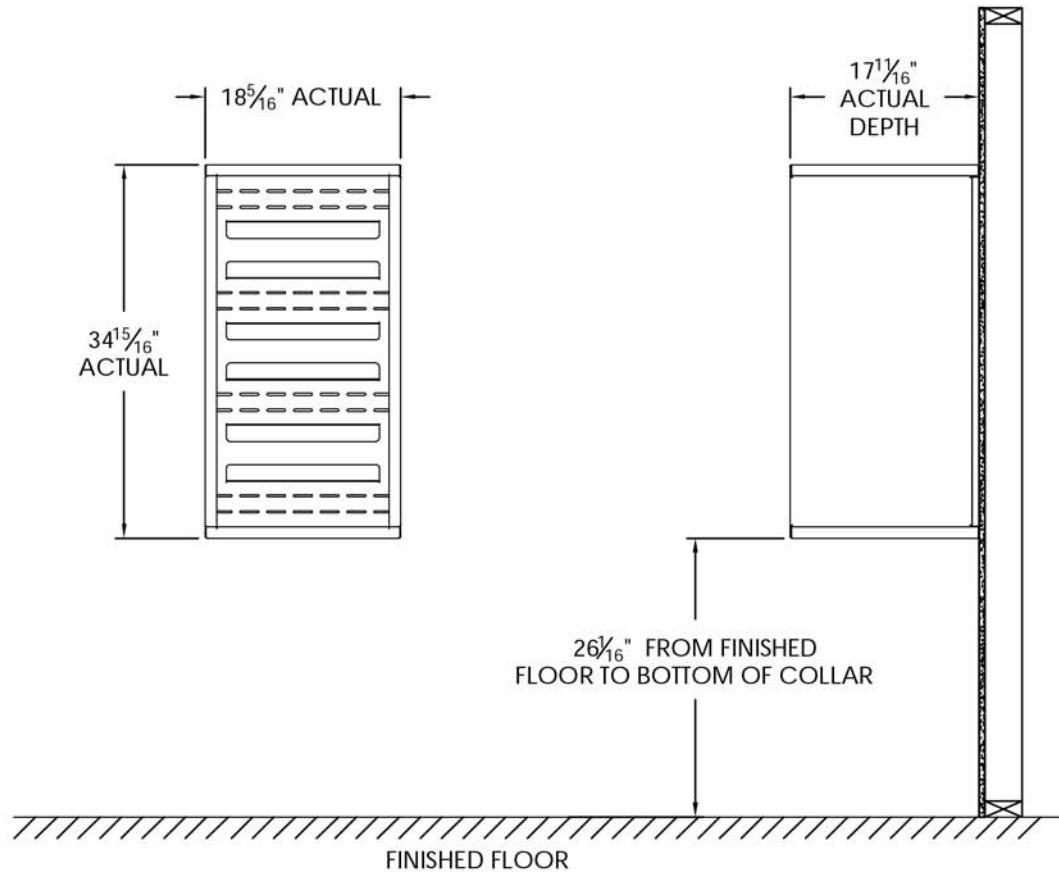


# versatile™ 4C Surface Mount Collar, SM09S



**Notes:**

1. Designed to mount Florence Versatile™ 4C mailbox single column 9-High Suite modules (sold separately).
2. For use with front loading modules only.

PRODUCT SERIES: VERSATILE™ 4C SURFACE MOUNT COLLAR



**NATIONALMAILBOXES**

A DIVISION OF NMHP INC.

North America's Commercial & Residential Mailbox Leader!

Address: P.O. Box 13144, Wauwatosa, WI 53213  
 Phone Number: 1-800-676-5161  
 Website: www.NationalMailboxes.com

MODEL	SM09S	REV	B
SCALE	NONE	LAST REV DATE	7/02/2014
DRAWING NUMBER	SM09SCS	DRAWN BY	TNS